

Used worldwide in over 3000 sites

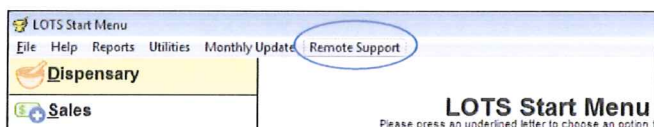
### Welcome to L.O.T.S

A very warm welcome to our new customers this month and a happy and prosperous New Year to all our customers.

### New to L.O.T.S this Month

#### Remote Support

There is a shortcut to **HealthSoft** 'Remote Support' on the top menu bar of the LOTS Start Menu.



#### Deleted/Discounted Report

There is an option to report on 'Sales At Cost Or Below'. From the LOTS Start Menu go to Tools, Sales Reports, 'Deleted/Discounted Sales'.

#### Rolling Stocktake

If 'Active Stock Only' is ticked, it will also show any items where there has been no stock movement for the last three months but there is stock on hand, as it used to do.

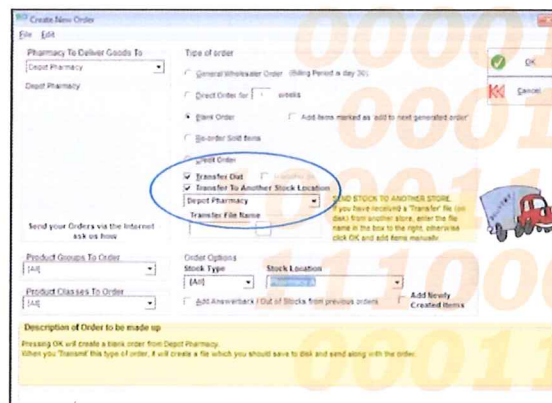
#### Orders

You can view a specific completed order in Orders, by going to 'View', 'View Specific Completed Order', and typing in the order number.

When delivering an order for a stock item which has "Don't Update SOH" ticked in the stockcard, it will not update the SOH.

#### Multi-Location Transfers

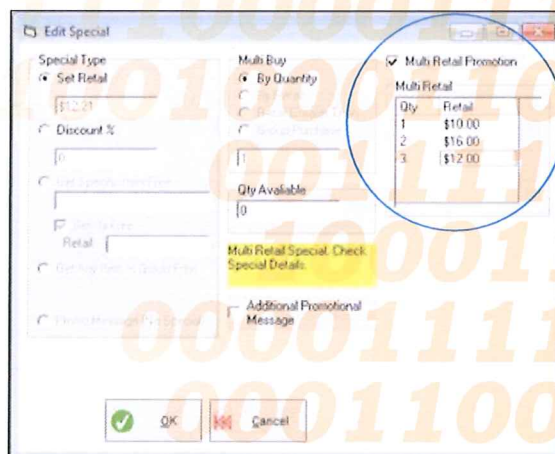
The process for multi-location transfers has been improved. When transferring out to another stock location, tick 'Transfer Out' and 'Transfer To Another Stock Location', then select the location you want to transfer to.



When you select 'Transmit'/'Transfer' on that order, the Stock on Hand is adjusted in both locations.

#### Specials - Multi Retail Promotion

There is an option for Multi Retail specials, eg. buy 1 for \$10.00, buy 2 for \$16 and buy 3 for \$12.



### Auckland Anniversary Weekend

Monday 31 January is Anniversary Day for the Auckland region. Our office will be closed for the day, however the emergency phone service will be available as usual.

### Supplier Updates

If you would like us to add a supplier, please contact us with the supplier details. The following supplier files have been updated this month:

Supplier Name	Done
Access Buying Group	
API Consumer Brands	
Apotex	
BDM Grange	
Bulletin	
CDC	
Coral Colours	
Cosmetic Sales Company	
Creative Energy	
Crombie & Price	
Douglas	
Ebos	
Envirosax	
Estee Lauder	
Eyewear Design Ltd	
Gainsborough	

Supplier Name	Done
Garnier	
Gary Harris Ltd	
Go Healthy NZ	
Jewellery Fashions Ltd	
Lifestream	
Loreal	
Maybelline	
Mondo Group	
Mylan NZ Ltd	
PBL	
PBL Central	
PDC – LIFE	
Pharmabroker	
Priceline (ProPharma)	
ProPharma	
PWL BOP	

Supplier Name	Done
PWL Central	
PWL Wellington	
QVS	
Russells	
Simunovich Olive Estate	
SSL New Zealand Ltd	
Synergy NZ Ltd	
USL Mdcl Cnsmr Prdcts	
Vantage	
Vellade Abbott King	
VIA + TLC	
Vision Mktg & Dist	
Wainhouse Agency	
Wainhouse Coll 2000	
Wainhouse Const Carol	

Please note: If your reps are asking you for specific reports out of LOTS, could you please ask them to contact us on (09) 300-7007. We'll provide them with instructions on how to do the report in LOTS.